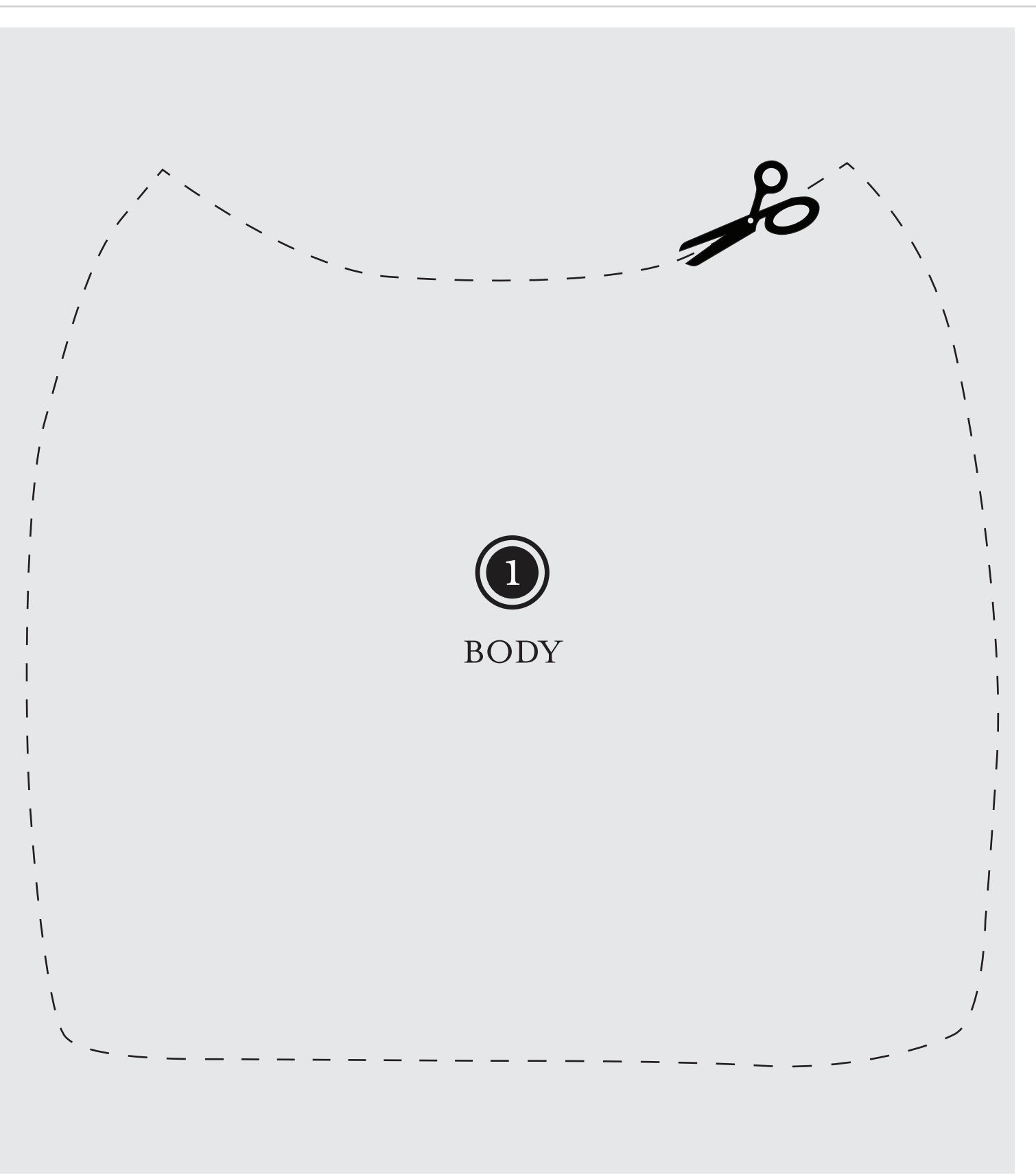


Panda Cake Template

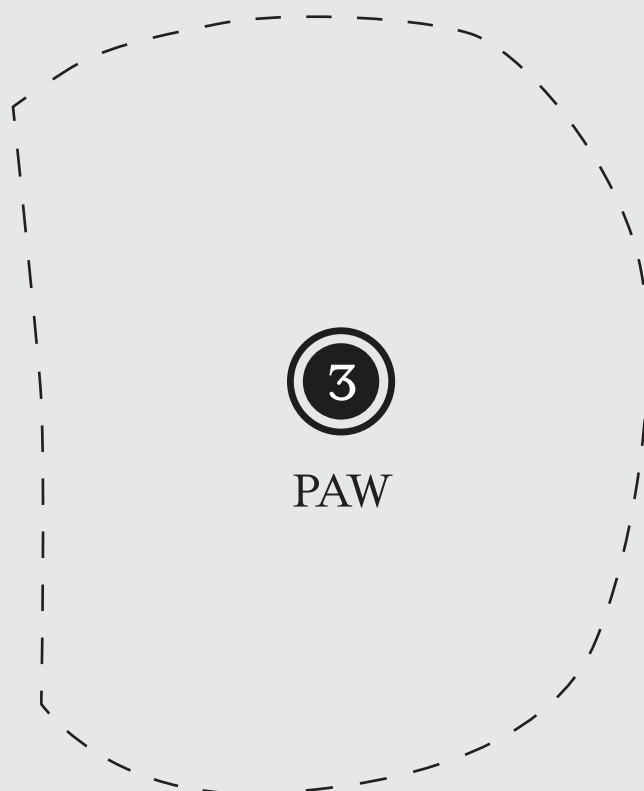
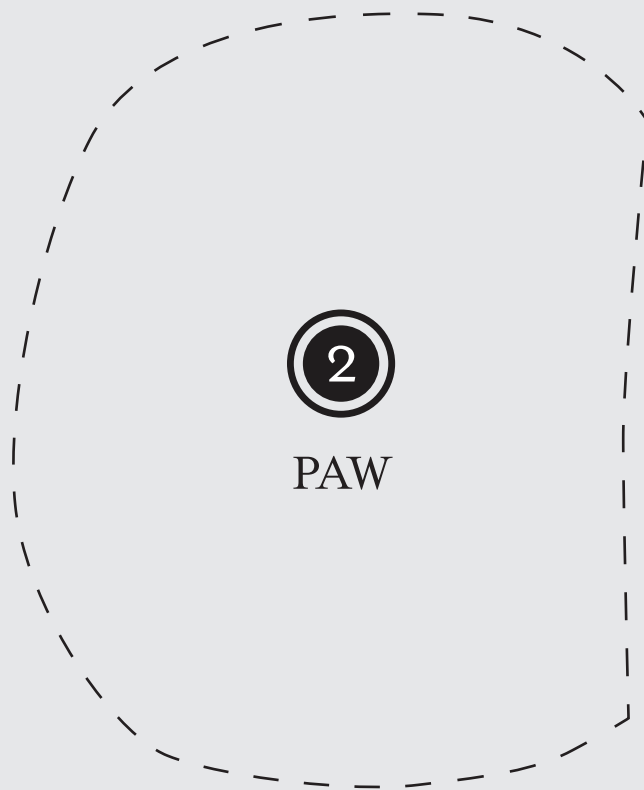
13x9-INCH PAN *Print on 8 1/2 x 11-inch paper and cut on dotted lines. For best results, transfer cutouts to heavier paper.*



Panda Cake Template

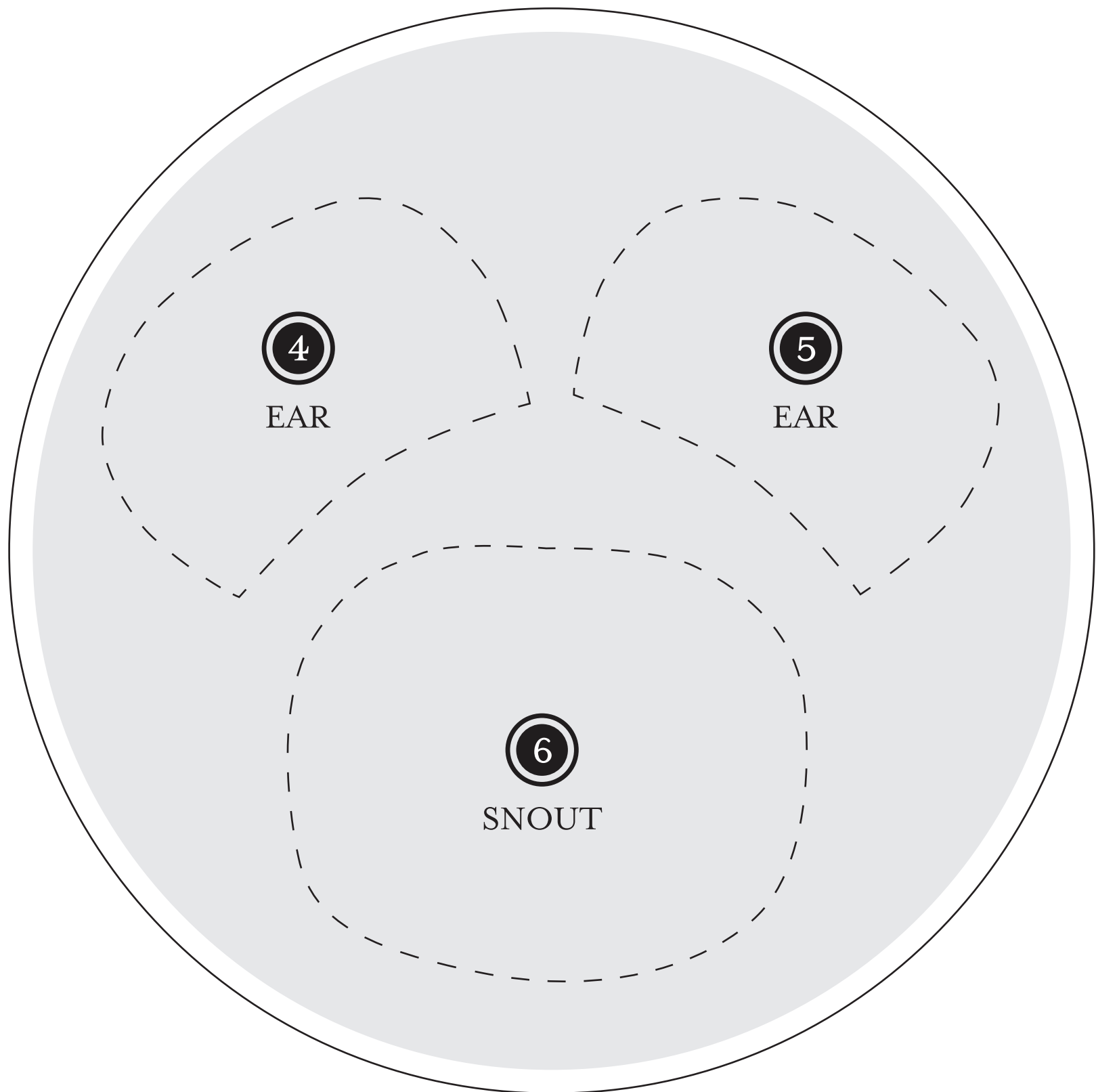
Betty Crocker™

13x9-INCH PAN *Print on 8 1/2 x 11-inch paper and cut on dotted lines. For best results, transfer cutouts to heavier paper.*

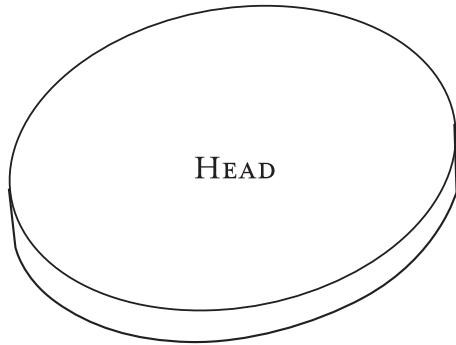


Panda Cake Template

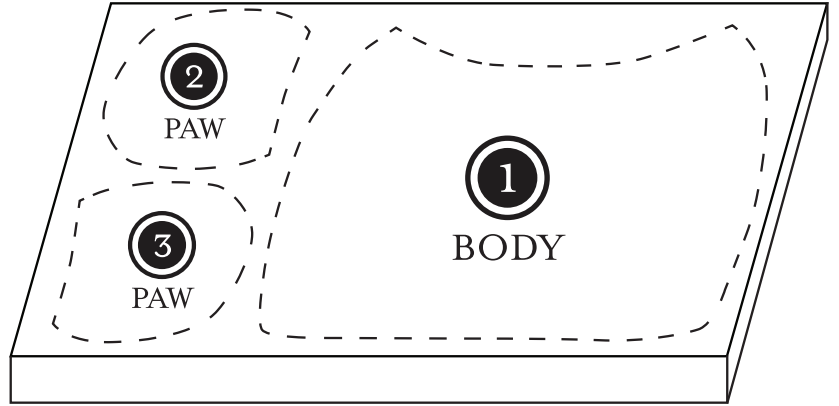
8-INCH ROUND PAN *Print on 8 1/2 x 11-inch paper and cut on dotted lines. For best results, transfer cutouts to heavier paper.*



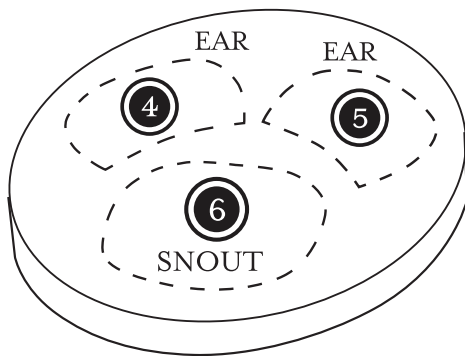
Panda Cake Assembly



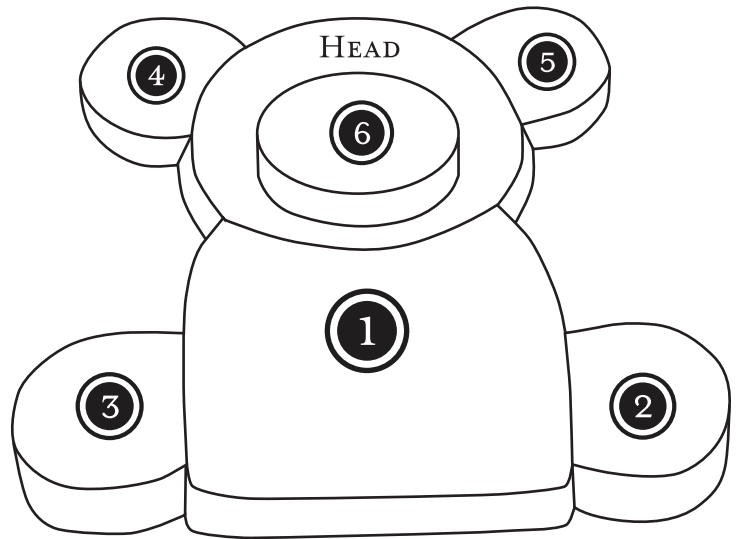
Set aside one 8-inch cake for the head.



Arrange templates for body and paws on the 13x9-inch cake and cut cake where dotted lines shown indicate.



Arrange templates for ears and snout on the other 8-inch cake and cut cake where dotted lines shown indicate.



Arrange pieces on tray to form panda and decorate.